

RLA^{net} Monitoring unit with locating



- Quick and precise localization of the leakage location
- Modbus RTU integration into the building surveillance
- Can be combined with sensor and point sensor

The monitoring unit RLA^{net} is a component of the BARTEC Water leakage detection system. It is operating with the sensor cable SCR and/or the point sensor PS. Further components of the BARTEC Water leakage detection system are the monitoring units RDW 03 and RDA 01, also the accessories. The system detects minor liquid leakages fast and reliable. An optical and acoustic signal arises. Simultaneously the potential-free contact switches. This can be used for signalling to PLC or to a building control unit. The leakage is being localized exact by 1 meter and get visualized on the 4-digit display. Thus a leakage will be found by a service person quick and true.

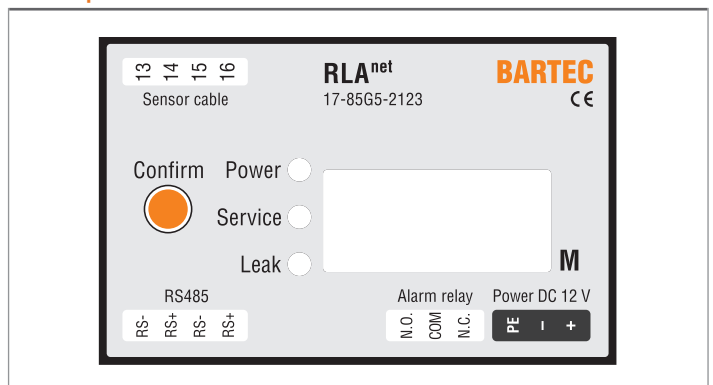
Visualisation

The service-software (for WINDOWS-PC) calls the system status via RS485 in real-time. The data is available in MODBUS RTU protocol. Up to 250 MODBUS addresses will be handled. The typical application parametrisation will also be managed by using this service-software. Download the service software and the extended manual on bartec.com.

Technical data

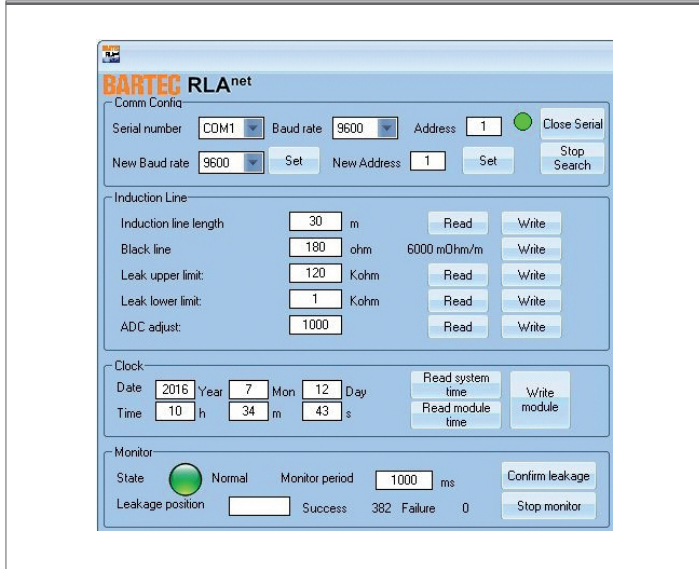
Power supply	DC 12 V to 24 V $\pm 10\%$; 3 W
Method of measurement	conductive (conductive liquids $> 30 \mu\text{S}/\text{cm}$) accuracy: $\pm 1\%$
Inputs	Sensor via 4-wire cable Sensor cable length: max. 500 m Point sensors: max. 50 pieces Sensitivity: adjustable
Outputs	Collective message alarm relay, 1 floating change-over contact AC 12: 0.5 A, 125 V DC 13: 1 A, 24 V RS485, Modbus RTU, for process visualization and parametrization
Memory	Alarm-/Break storage, last 32 happenings
Signal optical	Power LED red, relay de-energized Leak LED green, relay energized Service LED green, relay energized
Signal acoustic	Piezoelectric buzzer quit by pressing button on front panel
Ambient temperature	-20 °C to +50 °C at 5 % to 95 % air humidity (non-condensing)
Storage temperature	-40 °C to +60 °C
IP Code	IP 20
Housing material	Thermoplastic
Mounting	Clip-on enclosure for mounting rail TS 35
Dimensions (W x H x D)	70 mm x 86 mm x 53 mm
SCR sensor cable	Terminal 13, white, perforated Terminal 14, white, insulated Terminal 15, red, perforated Terminal 16, red, insulated
Point sensor PS terminal via installation cable	Terminal 13, strand No. 1 (e.g. white LIYY) Terminal 14, strand No. 2 (e.g. brown LIYY) Terminal 15, strand No. 3 (e.g. green LIYY) Terminal 16, strand No. 4 (e.g. yellow LIYY)

Front panel



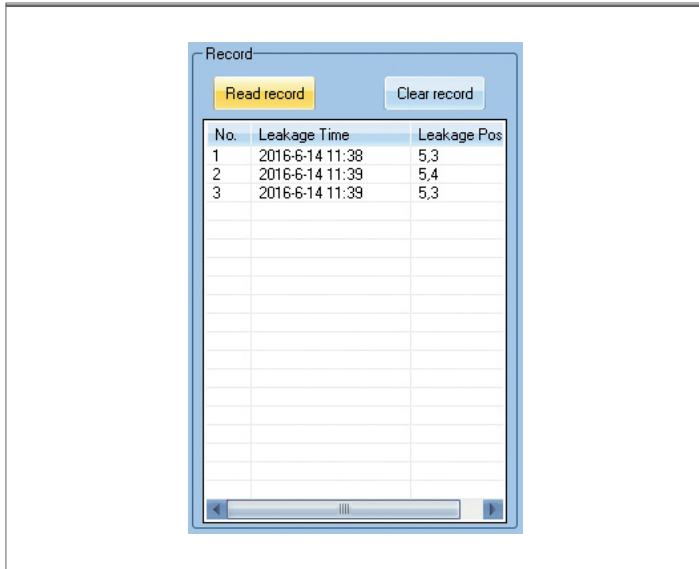
Service-Software

Parametrization



Service-Software

Memory display



Ordering information

Monitoring unit RLA ^{net} for DIN rail mounting	17-85G5-21230000
RLA ^{net} for wall-mounting:	
IP housing, 1 universal power supply, 1 RLA ^{net} , 1 power relay	17-85G5-21230100
IP housing, 1 universal power supply, 2 RLA ^{net} , 2 power relay	17-85G5-21230200
IP housing, 2 universal power supply, 4 RLA ^{net} , 4 power relay	17-85G5-21230400
IP housing, 1 universal power supply, 1 RLA ^{net}	17-85G5-21230901
IP housing, 1 universal power supply, 2 RLA ^{net}	17-85G5-21230902
Retrofit kit: IP housing, 1 universal power supply, 1 Modbus interface, for 1 RLA ^{net}	05-0095-0001
For connecting the Modbus between two housings: Installation kit RJ45 panel jack, 1 Ethernet CAT,6; 2 m	05-0080-1075
1 Modbus interface "RS485 to USB Adaptor	03-9829-0108
1 Universal power supply DC 24 V / 0,63 A Width: 1.5 DU; for TS35	03-9911-0037
1 Universal power supply DC 24 V / 4 A Width: 5 DU; for TS35	03-9911-0036
Other IP housing configurations on request. (Division Unit for distribution box acc. to DIN 43 880: 1 DU = 17.5 mm)	

RLA^{net} Monitoring unit, built in IP-box



Example:
IP box, 1 power supply,
1 RLA^{net} (power cord
and sensor cable not part
of delivery)

- Halogen-free box material
- Space-saving solution
- Ready-made for wall mounting

The RLA^{net} Monitoring unit built-in solution comes with pre-installed power supply unit, available in two amperages. The cable glands are ready mounted. The connection to Modbus is accessible from outside the box for easy set-up and servicing. Box types with load contactors are available as pre-installed solution.

Technical data

Power supply*	prim. AC 85-240 V / 16 A sec. DC 24 V / 0.63 A Option: sec. DC 24 V / 4.0 A
Alarm relay on RLA ^{net}	AC12 (125 V) 0.5 A DC13 (24 V) 1.0 A
Contactor load **	AC1 (230 V) 3680 VA AC3 (230 V) 1000 W
Modbus Interface	RJ45 jack access from outside box
Service module	Modbus – USB interface, ready mounted

Technical data of the box

Ambient temperature range	0 °C to +40 °C
Protection class according to EN 60529	IP 65 no UV protection
Impact protection class	IK08
Box material	ABS; PC for window
Color	grey, RAL 7035

Ordering information

Box type Order no.	RLA ^{net}	power supply*	load contactor**	Box size HxWxD	Modules (1 DU = 17.5 mm)	Glands
17-85G5-21230100	1x	0.63 A	1x	231x238x118 mm	8 DU	3x Ø4-8 mm; 1x Ø3-6.5 mm
17-85G5-21230200	2x	0.63 A	2x	286x418x148 mm	18 DU	3x Ø4-8 mm; 2x Ø3-6.5 mm
17-85G5-21230400	4x	2x 0.63 A	4x	586x310x148 mm	3x12 DU	3x Ø4-8 mm; 4x Ø3-6.5 mm
17-85G5-21230901	1x	0.63 A	-	231x202x113 mm	6 DU	3x Ø4-8 mm; 1x Ø3-6.5 mm
17-85G5-21230902	2x	0.63 A	-	246x310x148 mm	12 DU	4x Ø4-8 mm; 2x Ø3-6.5 mm
17-85G5-21230903	1x	4.0 A	-	246x310x148 mm	12 DU	3x Ø4-8 mm; 1x Ø3-6.5 mm

(more options on request)

BARTEC GmbH

Max-Eyth-Str. 16
97980 Bad Mergentheim

Tel.: +49 7931 597 0
Fax: +49 7931 597 119

Mail: info@bartec.com
Web: bartec.com

Technical data subject to change without notice.